



HIT PRINT
INTELLIGENTLY

WHY
upgrade
your large format printer?



Why should users upgrade from the HP Designjet 800 Printer series to the HP Designjet T790 ePrinter series?

Reduce overall costs on prints of similar print quality:⁽¹⁾

- Up to 30% lower ink cost-per-copy on monochrome prints
- Up to 33% lower ink cost-per-copy on color line prints
- Up to 6% lower ink cost-per-copy on GIS & rendered prints

Increased productivity and security:

- Over 4,3X more prints/hr⁽²⁾
- 8 GB dedicated file processing memory allows freeing up the network & ensuring very large files print flawlessly
- Save time using the HP Easy Printer Care / Printer Utility and enhanced support with HP Web Jetadmin

Improved print quality:

- Improved line accuracy from +/- 0,2% to +/- 0,1%
- Two blacks and a gray ink cartridge allow for deep blacks and smooth grays

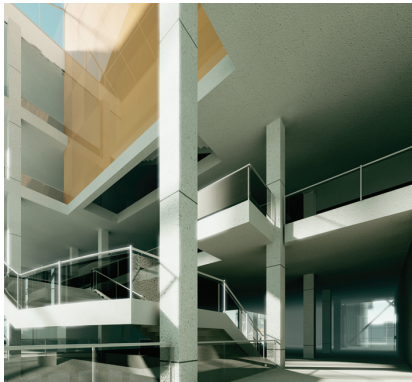
So easy and intuitive, you'll love using it:

- Print to any HP Designjet printer without installing any drivers thanks to HP ePrint & Share^(1.1)
- Discover the power of touch—this ePrinter's color touch screen enables intuitive operation and page previews
- Web-connected and easy to update. Software updates occur automatically, every six months
- Create a print-ready .PDF^(1.2) at the same time you print with HP ePrint & Share^(1.1)

⁽¹⁾ Prints of the same or better print quality are obtained using normal mode on the HP Designjet 800 Printer series and using fast mode on the HP Designjet T790 ePrinter series.

^(1.1) HP ePrint & Share is a free web-printing solution that lets you automatically manage content online. It requires an Internet connection.

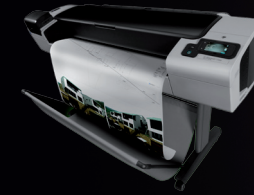
^(1.2) Remote Printing will be available by end of 2011.



HP Designjet 800 Printer series upgrade to HP Designjet T790 ePrinter series



HP Designjet 800 Printer series



HP Designjet T790 ePrinter series

INK COSTS FOR SAMPLE DRAWINGS¹

		Best/Normal	Fast	UP TO 33% SAVING	Best/Normal	Fast	Econo ²
Monochrome	71 X 49 cm	0,20 €	0,10 €		0,27 €	0,16 €	0,07 €
Color Line	71 X 49 cm	0,09 €	0,06 €		0,07 €	0,06 €	0,04 €
Rendered	74.7 X 55.9 cm	1,26 €	1,21 €		1,21 €	1,14 €	n/a

SAMPLE PRINT SPEEDS⁴

		Best	Normal	Fast	FASTER PRINTING!	Best	Normal	Fast	Econo
Monochrome	71 X 49 cm	3'35"	2'58"	1'39"		4'13"	1'20"	0'40"	0,32"
Color Line	71 X 49 cm	5'23"	2'47"	1'37"		4'20"	1'20"	0'41"	0,32"
Rendered	74.7 X 55.9 cm	10'59"	6'27"	2'57"		8'37"	3'01"	1'10"	n/a

PRINT QUALITY

	Best	Normal	Fast	IMPROVED QUALITY	Best	Normal	Fast/Econo ²
Resolution by Print Mode (dpi)	2400 x 1200	600 x 600	600 x 300		2400 x 1200	600 x 600	600 x 600
Line Accuracy		+/- 0,2%				+/- 0,1%	

ADDITIONAL IMPROVEMENTS

Cartridge Capacity	Four 69 ml cartridges	Six 69 ml or 130 ml cartridges
Media Roll Capacity	45 m	91 m
Media Roll Handling	Rear loading	Top loading roll
Interfaces	Centronics parallel, USB 1.1, EIO 10/100 internal print server	Fast Ethernet (100Base-T) port, Hi-Speed USB 2.0, EIO Jetdirect accessory slot
Data Security	Optional: HP Jetdirect 635n with Ipsec for secure data transfer	Secure Disk Erase (Permanently remove information from the printer) Optional: Jetdirect 635n with Ipsec for secure data transfer
Memory	96 MB / 160 MB max	8 GB of dedicated file processing memory ¹
Printer Management	HP Web Jetadmin	HP Web Jetadmin (Optional HP Jetdirect required), the HP Easy Printer Care/Printer Utility and queue management from the front panel
Direct Printing	Not applicable	Plug and Print directly from your USB drive (TIFF, JPEG and PDF's ⁵) or connect your laptop and hit print

Savings of up to 33% for prints of similar or better print quality. Thanks to improved technology and increased efficiency, the HP Designjet T790 ePrinter series delivers comparable or better print quality printing on fast/econo mode than as the HP Designjet 800 Printer series delivers using normal/fast mode - resulting in significantly lower ink costs and improved productivity.

No more waiting! With a significant decrease in actual printing time, and up to a 4,3X more prints per hour², users are able to increase their productivity starting on day one.

Using best mode users achieve stunning print quality for amazing presentations; they are also able to achieve more than acceptable results using fast mode for their everyday prints saving both time and money.

Improved productivity and security:

- Discover the power of touch—this ePrinter's color touch screen enables intuitive operation and page previews.
- Increased unattendedness with larger ink and media capacity.
- In-printer file processing reduces network traffic.
- HP Web Jetadmin with improved fleet management.
- HP Embedded Web Server for remote printer and job management.

¹ 384 MB RAM.
² With Economode: 50% less black optical density comparing with fast mode.

³ Figures may vary from country to country depending on local pricing.

⁴ Mechanical Printing Time (MPT): the time elapsed between the moment the first drop is printed on the paper and the moment the paper is cut from the printer. (Total Time - Click to Start).

⁵ PDF files only available with PostScript accessory (optional accessory to be purchased separately) or buying PS versions.